



This project is co-funded by the European Union

COUSTEAU

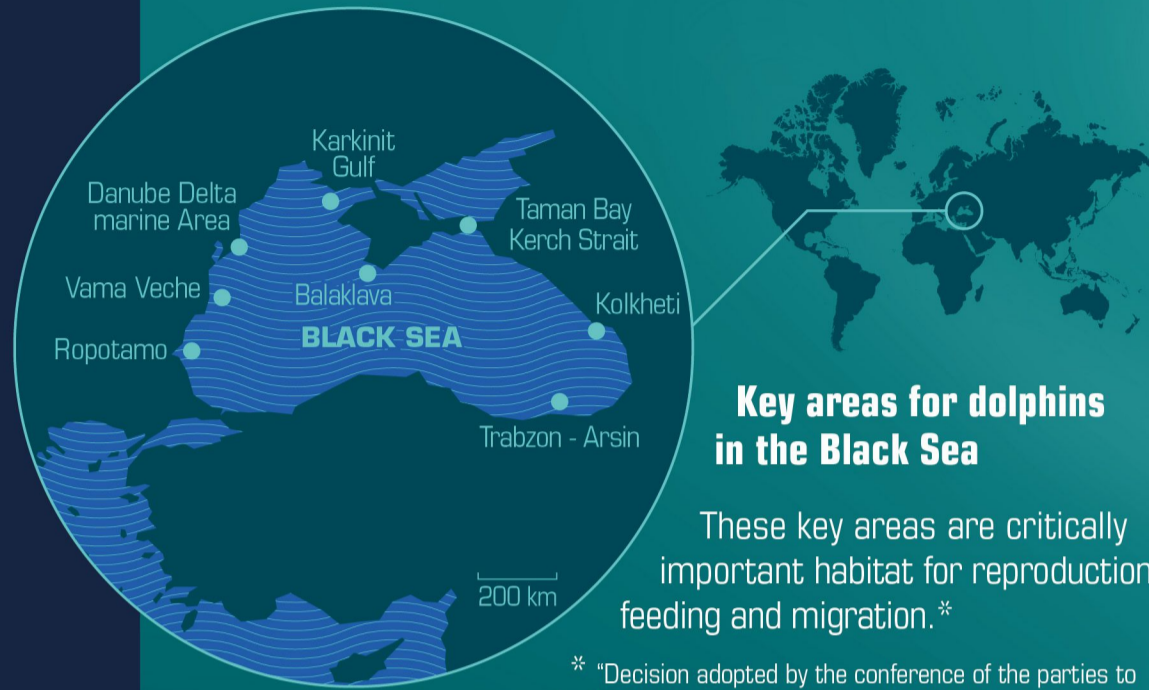
WWW.COUSTEAU.ORG
CUSTODIAN OF THE SEA
SINCE 1943

DOLPHINS

FLAGSHIP SPECIES OF THE BLACK SEA

LIFE HISTORY AND RISKS

EMBLAS-Plus
Environmental Monitoring in the Black Sea



In the Black Sea, there are 3 endemic subspecies of dolphins.

Dolphins are aquatic mammals. They are predators and they eat mainly fish. They use their sonar to detect their prey.

Threats posed to the dolphins of the Black Sea



Bycatch in fishing nets and overfishing



Chemical pollution and marine litter



Noise pollution



Critical disease of unknown origin



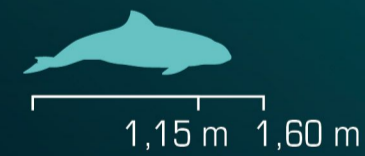
Illegal catch (for dolphinarium)



Black Sea Harbour Porpoise

Phocoena phocoena relicta

SIZE



LIFE SPAN



BEHAVIOR

They live alone or in small groups



IUCN STATUS



Black Sea Common Dolphin

Delphinus delphis ponticus

SIZE



LIFE SPAN



BEHAVIOR

They live in large communities



IUCN STATUS



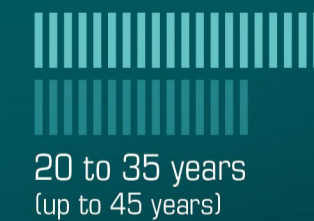
Black Sea Bottlenose Dolphin

Tursiops truncatus ponticus

SIZE



LIFE SPAN



BEHAVIOR

They live in groups from few individuals to several dozen.



IUCN STATUS



WHAT CAN WE DO ABOUT IT?

We can all act to make things better!

As a citizen: Never try to touch, catch or chase a dolphin. Do not try to feed them. Boycott marine theme parks that use dolphins. Sort your trash. Never dispose of your waste in the wild.

As a decision maker: Reinforce laws relating to the coastline and the protection of marine mammals. Promote sustainable fisheries. Take action against industrial polluters.

More information at emblasproject.org

